

AUTOVUE VUELINK INTEGRATION FOR ENOVIA

KEY FEATURES AND BENEFITS

KEY FEATURES

- Hundreds of supported formats
- Web-based document viewing
- Work offline mode
- Real-time collaboration
- Browse-and-search function
- 3D intelligent comparison
- Digital mockup
- Cross-probing
- Measurements
- Markups, annotations, and comments saved as distinct overlays
- Renditions generation
- Support for distributed file collaboration servers (eFCS)

KEY BENEFITS

- Standardize design review and troubleshooting processes
- Capture digital audit trail of collaboration steps within the design context
- Enhance ENOVIA product lifecycle management solutions with integrated document visualization and collaboration
- Enhance collaboration and improve the way product information is communicated
- Maintain document integrity and collaborate securely without risking IP

Oracle's AutoVue VueLink Integration for ENOVIA adds the powerful document visualization, markup and real time collaboration capabilities of Oracle's AutoVue visualization solutions to ENOVIA, delivering Web-based viewing of engineering and product information. Together, Oracle's enterprise visualization solutions and ENOVIA deliver a robust set of capabilities that help enterprises leverage product data throughout the product lifecycle, adopt collaborative best practices, and drive high-quality products to market faster and at a lower cost.

Extend the Value of Your ENOVIA Investment

ENOVIA (formerly MatrixOne) is a comprehensive solution for managing product development from concept to completion. AutoVue enterprise visualization solutions enable users to view, markup, and collaborate on documents without requiring the authoring applications and without altering the original document. AutoVue VueLink Integration for ENOVIA bridges these two solutions so organizations can leverage product data product throughout the product lifecycle and streamline collaboration with internal teams, suppliers, and partners—regardless of their software environment—while also protecting valuable intellectual property.

Standardize on a Single Visualization Solution

AutoVue enterprise visualization solutions allow users to access, view, and review hundreds of document types including 2D computer-aided design (CAD) drawings, 3D models, printed circuit board (PCB) layouts and schematics, and Microsoft Office documents. By standardizing on a single solution for all visualization requirements, the cost of purchasing, managing, and training employees to use multiple viewing and authoring applications is eliminated. Organizations can greatly reduce their licensing and maintenance costs and simplify their IT infrastructure by leveraging a single solution for all product information visualization and collaboration requirements.

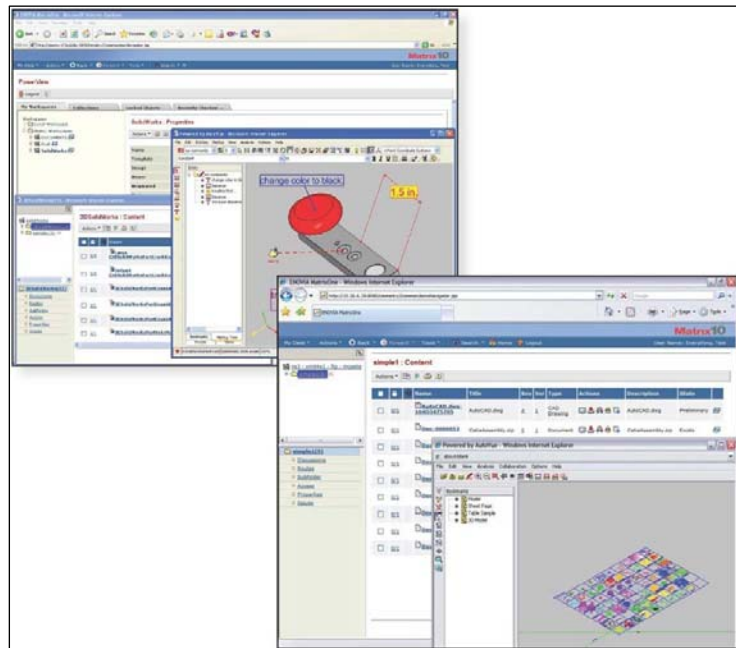


Figure 2: View hundreds 3D CAD, 2D CAD or EDA document types directly within ENOVIA.

No Data Conversion Required

By handling data natively, AutoVue enterprise visualization solutions allow users to open, view, and review original documents without undergoing costly and error-prone conversions. Because file conversion is not required, the tedious task of creating and managing a double set of data is eliminated. Users can be confident that they are always working with the latest version of a file, and that business decisions are based on accurate information.

Expedite Design Reviews & Capture Reliable Audit Trail

Adding the powerful digital markup capabilities of AutoVue solutions to ENOVIA, organizations can expedite design reviews and trouble shooting processes as well as capture an audit trail of all changes, decisions and approvals for full accountability and compliance. Providing access to the visual context of products during design reviews makes it easier to identify errors or design flaws early in the process. This minimizes costly rework and helps get products to market faster.

AutoVues' rich set of markup entities allows users to digitally markup documents and effectively capture comments, change requests, and instructions within the design context, which are recorded and tracked digitally. All markups and annotations are created as distinct overlays—on top of the original file—and stored directly in the ENOVIA repository. Reviewers can then turn markup layers on and off as needed, selecting only those that they wish to view.

Leverage ENOVIA Online Meeting Capabilities

The real-time collaboration capabilities in AutoVue enterprise visualization solutions enable team members to initiate synchronous workgroup collaboration

RELATED SOLUTIONSORACLE'S AUTOVUE
ENTERPRISE
VISUALIZATION
SOLUTIONS

AutoVue solutions can be integrated into existing content management, product lifecycle management, or enterprise applications. Integrated with existing enterprise systems, AutoVue connects information, people and processes, delivering anytime, anywhere access to vital information and maximizing business process efficiency.

Teams can better collaborate around their engineering and product documents and make sound business decisions, driving innovation and operational efficiency.

RELATED PRODUCTS

- AutoVue Office
- AutoVue 2D Professional
- [AutoVue 3D Professional Advanced](#)
- AutoVue EDA Professional
- [AutoVue Electro-Mechanical Professional](#)
- AutoVue VueLink Integrations

sessions from the ENOVIA environment and instantly exchange views and ideas in the context of the design. Markups and chat are captured as part of the online sessions for future reference. Collaboration is improved and information and ideas can be communicated in an efficient and secure manner across the global enterprise.

Share Documents Securely without Risking IP

AutoVue enterprise visualization solutions deliver instant and secure access to original documents without leaving a document footprint on the client's machine. AutoVue VueLink Integration for ENOVIA follows ENOVIA permission settings and ensures that the original document, with its proprietary data, is never transferred to the client machine. Users only have access to a rendering of a document for viewing and markup. The original document is never altered and all markups and annotations are directly saved in the ENOVIA vault.

Contact Us

For more information about Oracle's AutoVue VueLink Integration for ENOVIA, please visit oracle.com/applications/autovue, call +1.800.363.5805 or +1.514.905.8400 to speak to an Oracle representative, or e-mail autovuesales_ww@oracle.com.

For more information about AutoVue visualization capabilities click on the active links in the Related Products sidebar.

Copyright © 2010, Oracle and/or its affiliates. All rights reserved.

This document is provided for information purposes only, and the contents hereof are subject to change without notice. This document is not warranted to be error-free, nor is it subject to any other warranties or conditions, whether expressed orally or implied in law, including implied warranties and conditions of merchantability or fitness for a particular purpose. We specifically disclaim any liability with respect to this document, and no contractual obligations are formed either directly or indirectly by this document. This document may not be reproduced or transmitted in any form or by any means, electronic or mechanical, for any purpose, without our prior written permission.

Oracle is a registered trademark of Oracle Corporation and/or its affiliates. Other names may be trademarks of their respective owners.